

First-Year Advisors



Sarah Kylo
First-Year
Head Advisor



Julia Rosenzweig
Academic Advisor



Nathan Simmons
Academic Advisor

new advisor
coming soon!
Academic Advisor

new advisor
coming soon!
Academic Advisor

COLLEGE OF Engineering

Advising in the College of Engineering

You will work with one of the advisors pictured on the left for your whole first year and will find out who your advisor will be before Fall Term begins. These advisors are able to help you find resources and support so you can have a smooth transition into college. After your first year, once you have had a chance to take engineering classes and affirm your major choice, you will move on to get advising from the school advisors affiliated with the engineering major you have chosen. You will work with those advisors from your second year until you graduate.

Advising Resources

The three main ways you will utilize advising in your first year will be through the Canvas course, appointments that you schedule with your advisor, and drop-in advising.

Canvas

You have been enrolled in the First-Year Engineering Students, non-credit, non-fee, Canvas course for the year. This course will provide you with important information and actions, activities, or reflections that we recommend you do each term to ensure that you are prepared and aware of opportunities related to class registration, academic policies, career exploration, co-curricular opportunities, and resources for academic success.

Advising Appointments

You will be required to meet with your advisor at least once a term in your first year. Advising appointments are scheduled for 30 minutes and are primarily used to guide you through your class planning but can also be used for more involved discussions related to your adjustment to college and plans for the future. You will also get your registration PIN during your advising appointment. You cannot register for classes until you have your registration PIN.

To schedule an appointment with your advisor, check your advisor's schedule and make an appointment using the "Advising Appointment Calendars" in the Resources Module on Canvas.

Drop-in Advising

Come to Drop-ins when you have a quick question (10 minutes or less), such as registration errors or needing to get a form signed.

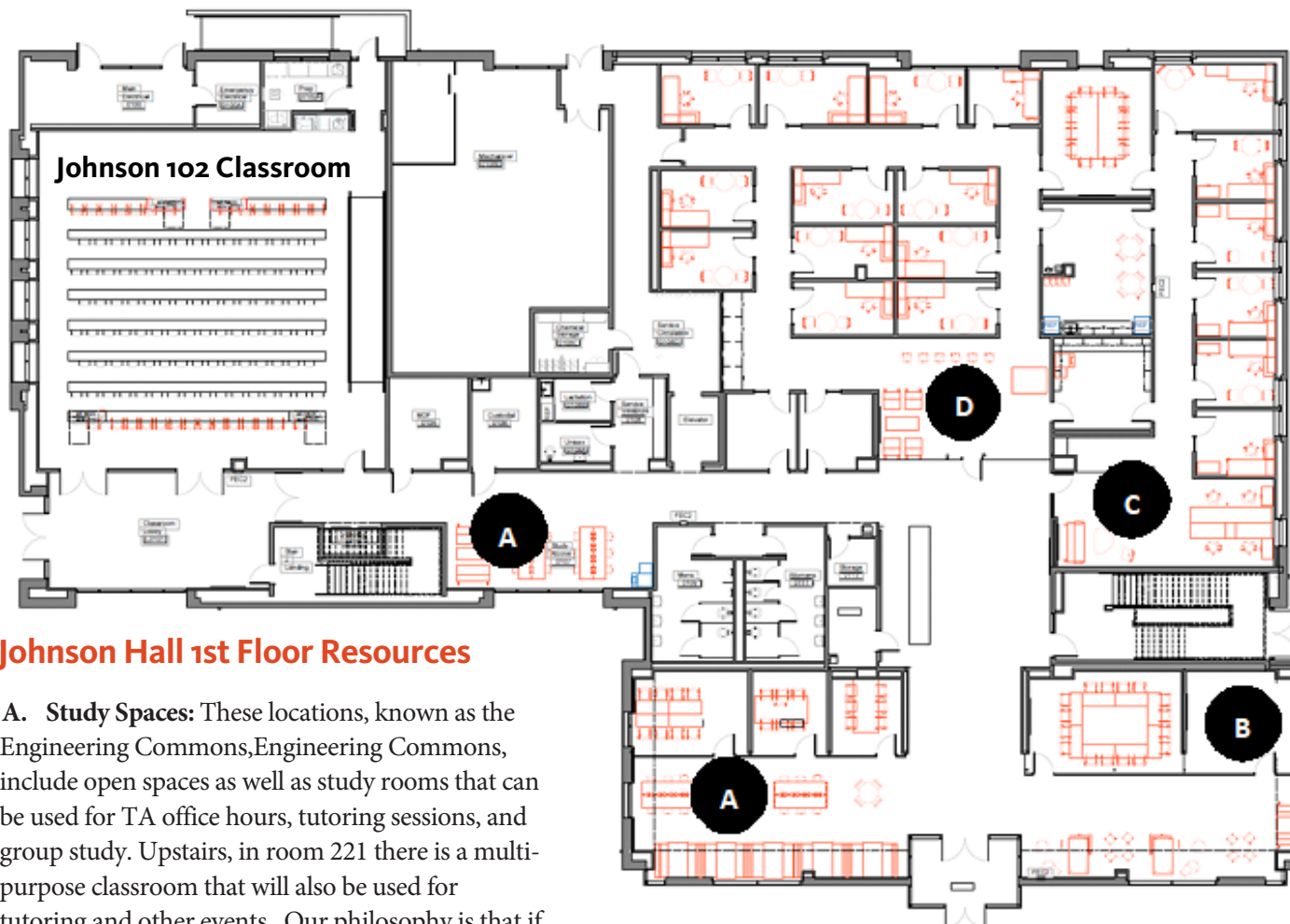
Registration PINs will not be provided during Drop-ins.

More info on in-person and/or remote drop-in times will be available by fall term through Canvas.

Office of Student Services
114 Johnson Hall
enr.oregonstate.edu
541-737-5236



Oregon State
University



Johnson Hall 1st Floor Resources

A. Study Spaces: These locations, known as the Engineering Commons, include open spaces as well as study rooms that can be used for TA office hours, tutoring sessions, and group study. Upstairs, in room 221 there is a multi-purpose classroom that will also be used for tutoring and other events. Our philosophy is that if it's open and not reserved, it's available for students to use!

B. Career Development: Open to all engineering majors, the satellite Career Development Center in room 124 provides drop-in support for students with questions about resumes, job searching, interviewing and other related topics.

C. CBEE Advising: After their first year, chemical, biological and environmental engineering students will meet with their advisors in suite 116. Other engineering majors will go to different buildings affiliated with their majors.

D. Office of Student Services: First-year advising for the College of Engineering is done in the 114 suite or via Zoom (remotely). Students will schedule for appointments through Canvas.

Additional Resources

Refer to First Year Advising Canvas page and your advisor for more information on:
Applying for Scholarships, Undergraduate Research Opportunities, Internships, In-person or Remote Tutoring, Clubs and Organizations, and Study Abroad!

Johnson Hall 2nd Floor Resources

- 1. Center for Diversity and Inclusion:** This lounge area in Johnson 220 is a comfortable space with ample natural lighting - ideal for studying. The center also provides a community of support and academic resources for underrepresented students and affiliated professional organizations within the College of Engineering.
- 2. Leadership Center:** This lounge area in Johnson 219 is a comfortable space with ample natural lighting - ideal for studying and collaboration. This center is also home to the College of Engineering Leadership Academy, Catalyst Scholars, and Grand Challenge programs which provides valuable professional and leadership development opportunities.



Oregon State University
College of Engineering